

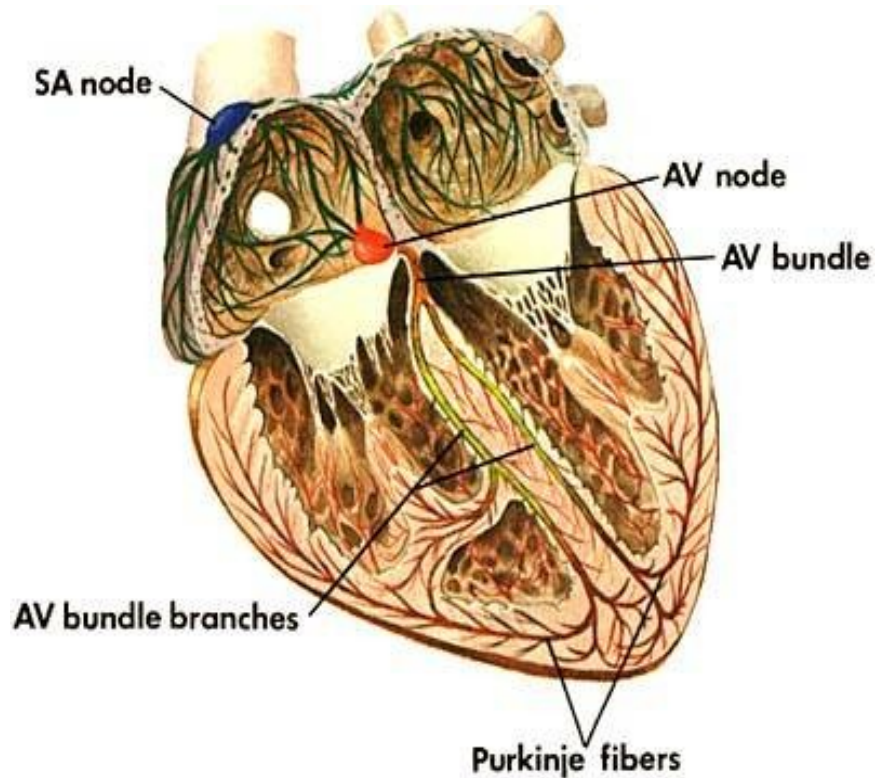
Excitable Media as Model of Cardiac Arrhythmia

Werner Lehner
23.03.11

Outline

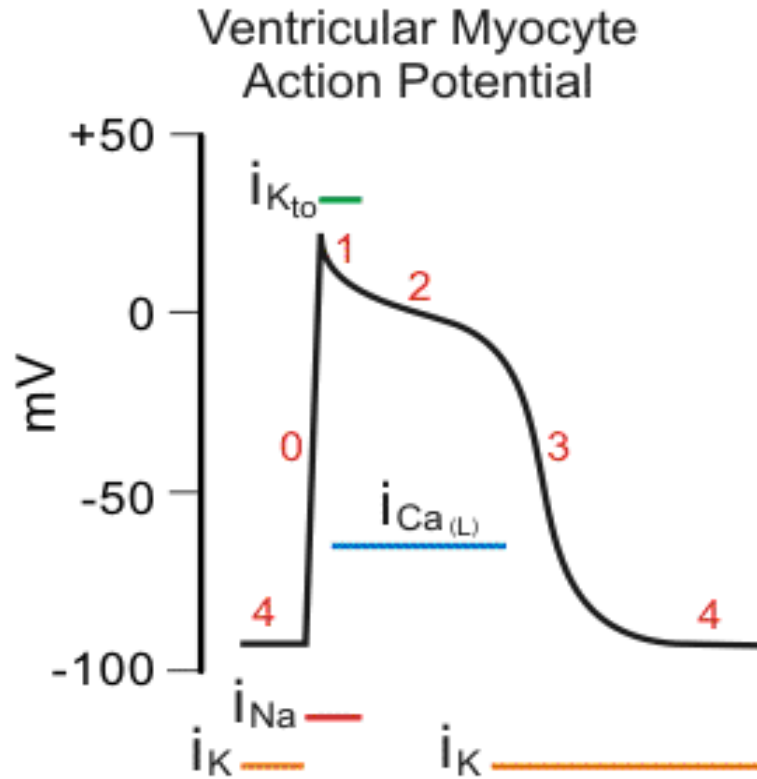
- Cardiac Arrhythmias
 - Cardiac Conduction System
 - Action Potential
 - Fibrillation
 - Reentry
- Modeling
 - Model
 - BZ-Reaction
 - Finite Element Method
 - Software
- Simulations
 - Plain
 - Sphere
 - Real Geometry

Cardiac Conduction System



- SA-node: primary pacemaker
- AV-node: electrical connection between atria and ventricles
- Av-bundle (His-bundle): transmission to apex
- Purkinje fibers: distribution to ventricular myocardium
- Contraction starts at apex
- AP spreads across ventricles (gap-junctions)

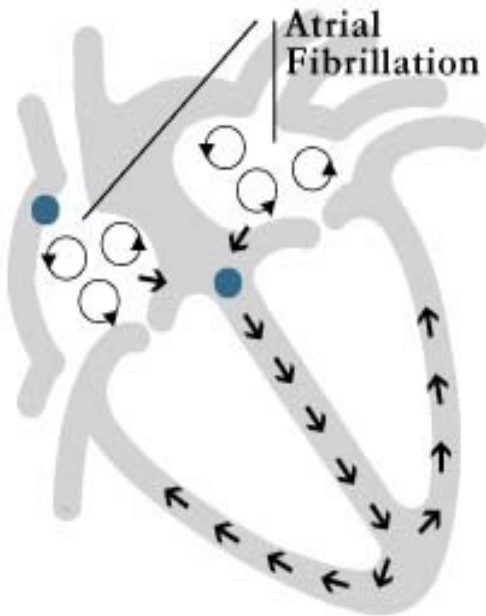
Action Potential



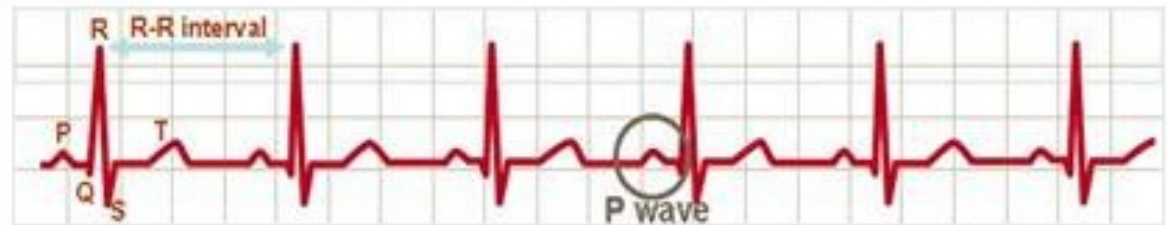
- Rapid change of transmembrane Potential
- Complex system of ion channels
- Resting Potential (4)
- Threshold Potential: $\sim -70\text{mV}$
- Fast depolarization (0)
- Slow repolarization (2,3)
- Effective refractory period (ERP): new AP can not be triggered
- No back-propagation of APs
- All-or-none-characteristic

Fibrillation

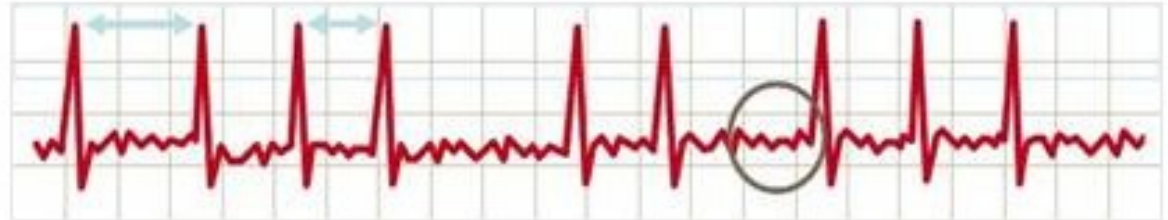
- Uncoordinated, very rapid activity
- Complex, chaotic electrical patterns
- Atrial (AF), ventricular fibrillation (VF)
- APs propagate on irregular pathways
- Deterioration of atrial/ventricular function
- ECG: P-wave replaced by fibrillatory waves (AF)



Sinus rhythm

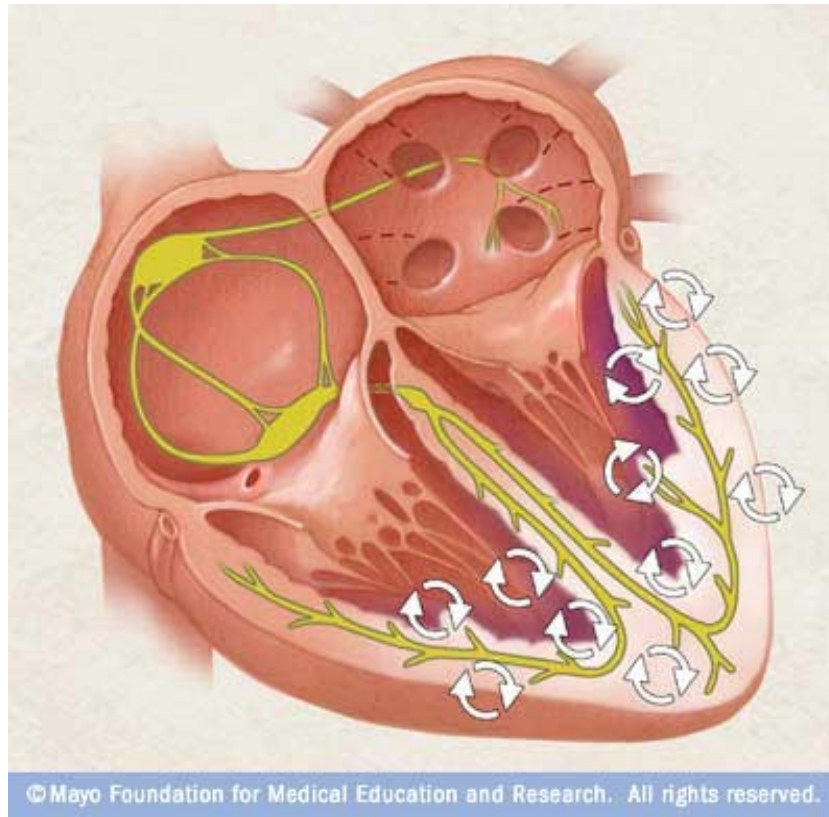


AF



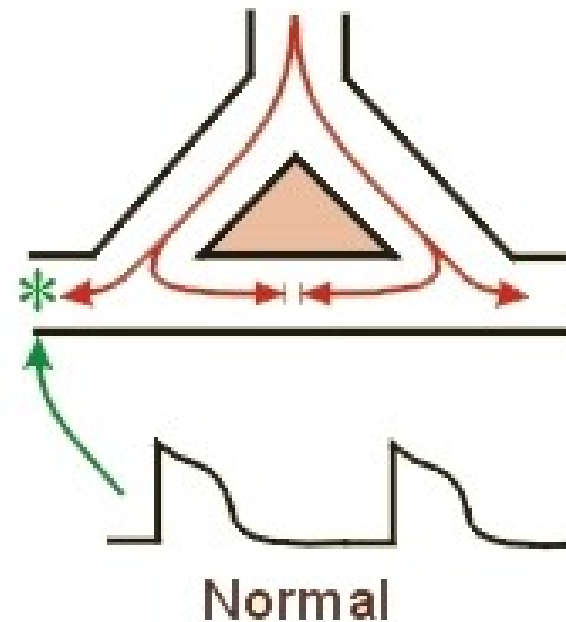
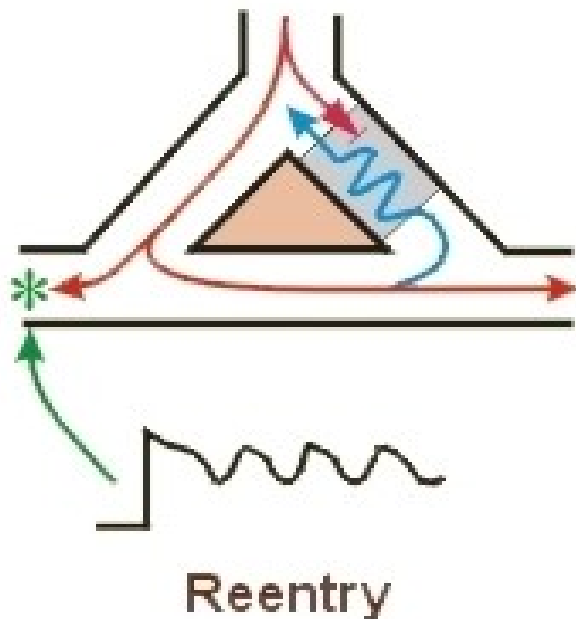
Fibrillation

- Substrate: inhomogeneities in electrophysiol. properties of myocardium (refractory period, conduction velocity, excitability)
- Fractionation of wavefronts in such areas (multiple wavelet mechanism)
- Formation of self-perpetuating impulses (reentry mechanism)

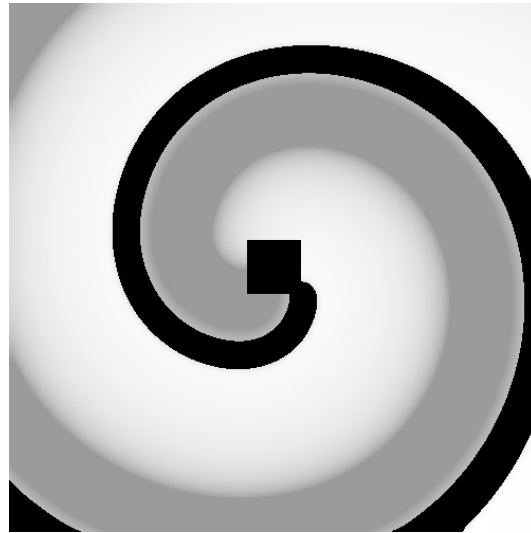
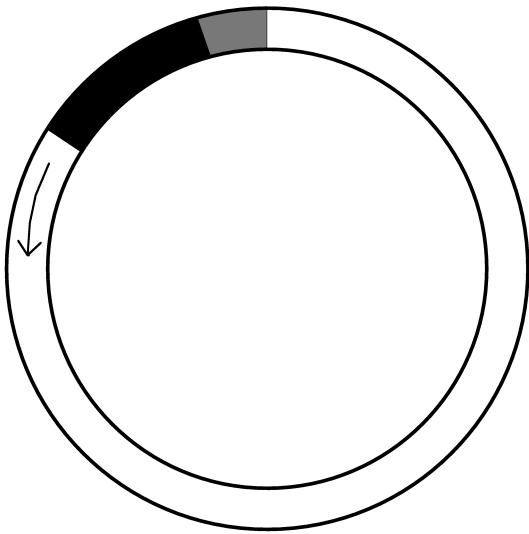


Reentry

- Obstacle: anatomic (myocardial infarction), functional (refractory area)
- Unidirectional conduction block
- Wavelength = conduction velocity x refractory period
- Reentry possible if pathway \geq wavelength



Reentry



“Leading circle”: source of spiral waves

Therapy

- Drugs (change electrophysiol. parameters, AF)
- Ablation (AF): destruction of reentry pathways
- Defibrillation (VF): depolarization of the whole myocardium by internal or external high-energy shock
- No mild therapy available (VF)

Termination of (multiple) Reentry by local low-energy Stimulation?

Outline

- Cardiac Arrhythmias
 - Cardiac Conduction System
 - Action Potential
 - Fibrillation
 - Reentry
- Modeling
 - Model
 - BZ-Reaction
 - Finite Element Method
 - Software
- Simulations
 - Plain
 - Sphere
 - Real Geometry

Modeling

- Goals:
 - Simulation of reentrant-excitation
 - Simulation of electric stimulation
 - Stimulation-algorithm for termination of reentry
- ToDo:
 - Choice of appropriate mathematical Model
 - Method for numerical solution
 - Software-framework
 - Simulations

Models

- Cell-based models:
 - Model for membrane potential of a single cell
 - Emulation of ion-channel functionality
 - e.g. Hodgkin-Huxley-Model:

$$C_{Mem} \frac{dV_{Mem}}{dt} = I_{Na} + I_K + I_{Ext} + I_L$$

- in most cases very complex (>30 PDEs)
- Tissue = network of many single cells → numerical effort

Models

- Excitable media
 - Model for system of many cells
 - Reaction-diffusion system
 - AP described by activator-inhibitor system (“reaction”):

$$\frac{\partial u}{\partial t} = f(u, v) \quad , \quad \frac{\partial v}{\partial t} = \varepsilon g(u, v)$$

- AP-propagation (“diffusion”)

$$\dot{u} = D \nabla^2 u$$

- U: membrane potential („activator“)
- V: repolarization current („inhibitor“)
- AP-characteristics: ref. period, no damping, all-or-none

EM-Models

- Starobin-Starmer:

$$\frac{\partial u}{\partial t} = D \nabla^2 u + \lambda(u)u - m - v \quad , \quad \frac{\partial v}{\partial t} = \varepsilon(\gamma u - v)$$

- Panfilov:

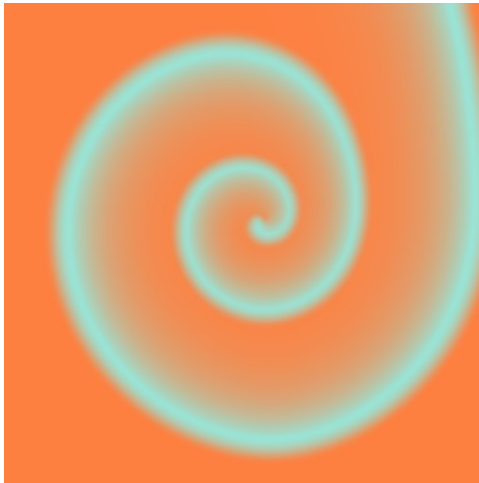
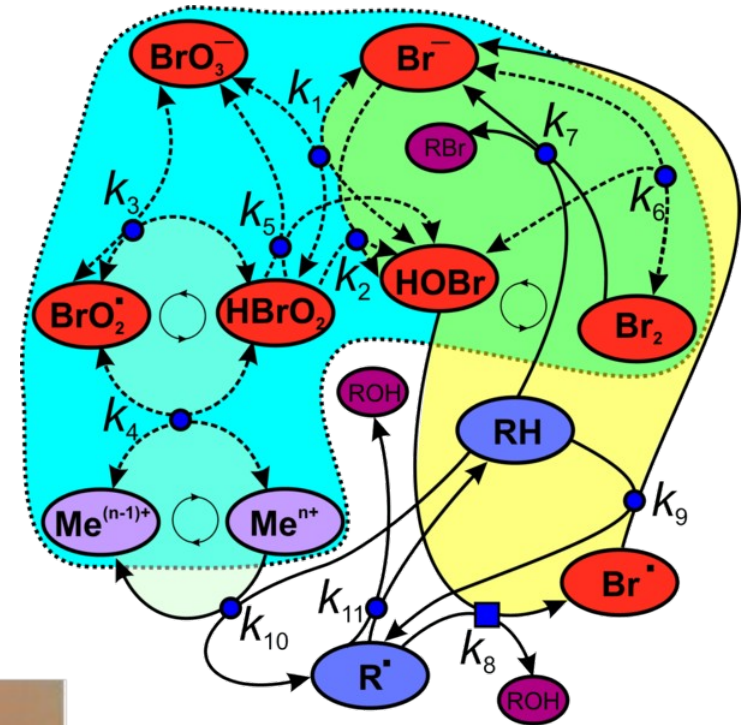
$$\frac{\partial u}{\partial t} = D \nabla^2 u + \lambda(u, v)u - m - v \quad , \quad \frac{\partial v}{\partial t} = \varepsilon(u, v)(\gamma u - v)$$

- Tyson-Fife (BZ-reaction)

$$\frac{\partial u}{\partial t} = D \nabla^2 u + u - u^2 - (fv + \phi) \frac{u - q}{u + q} \quad , \quad \frac{\partial v}{\partial t} = \varepsilon(u - v)$$

BZ-Reaction

- Nonlinear chemical oscillator
- High complexity
- Well-known example of an excitable medium
- Good correspondence between simulation and experiment
- Simplification of complex systems to few variables is feasible



simulation



experiment

Finite Element Method

- Strong form (e.g Poisson-eq):

$$-\nabla^2 u = f$$

- Division of domain Ω in M subdomains (meshing)

$$\Omega = \sum_{j=1}^M \Omega_j$$

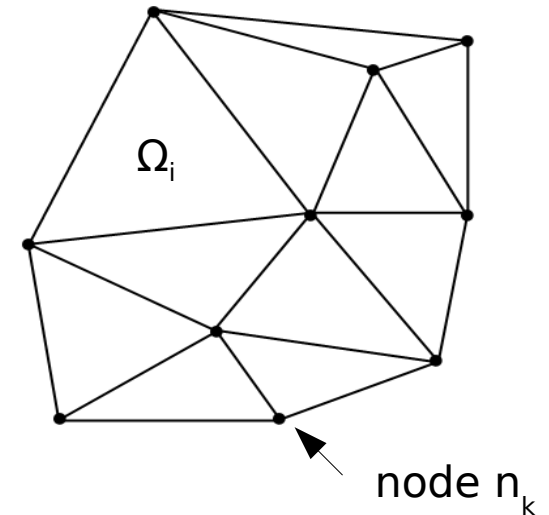
- Weak form:

$$\int_{\Omega} v \nabla^2 u = \int_{\Omega} v f \quad \longrightarrow \quad \int_{\Omega} \nabla v \nabla u = \int_{\Omega} v f$$

- Sobolov space H :

$$v \in H_0^1(\Omega) : \int_{\Omega} [(v')^2 + v^2] d\Omega < \infty$$

$$v, u \in H_0^1(\Omega) : \int_{\Omega} v \nabla^2 u = \int_{\Omega} v f \quad \forall v \quad \longleftrightarrow \quad -\nabla^2 u = f$$



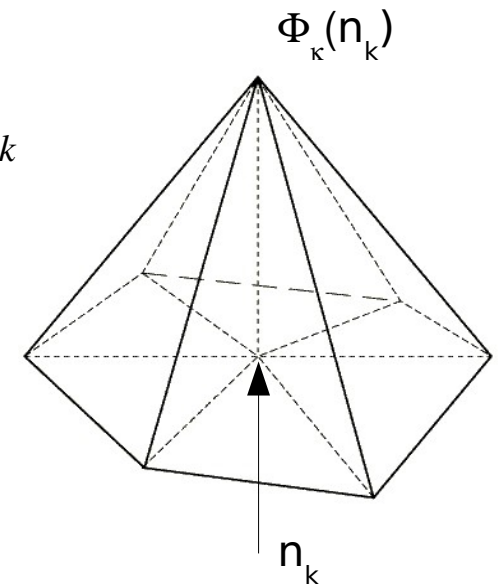
Finite Element Method

- Basis of H, e.g. linear:

$$\Phi_i(x, y) = \alpha_i + \beta_i x + \gamma_i y \quad , \quad \Phi_i(n_k) = \delta_{ik}$$

- Approximation of u:

$$u_{appr} = \sum_{i=1}^N u_i \Phi_i$$

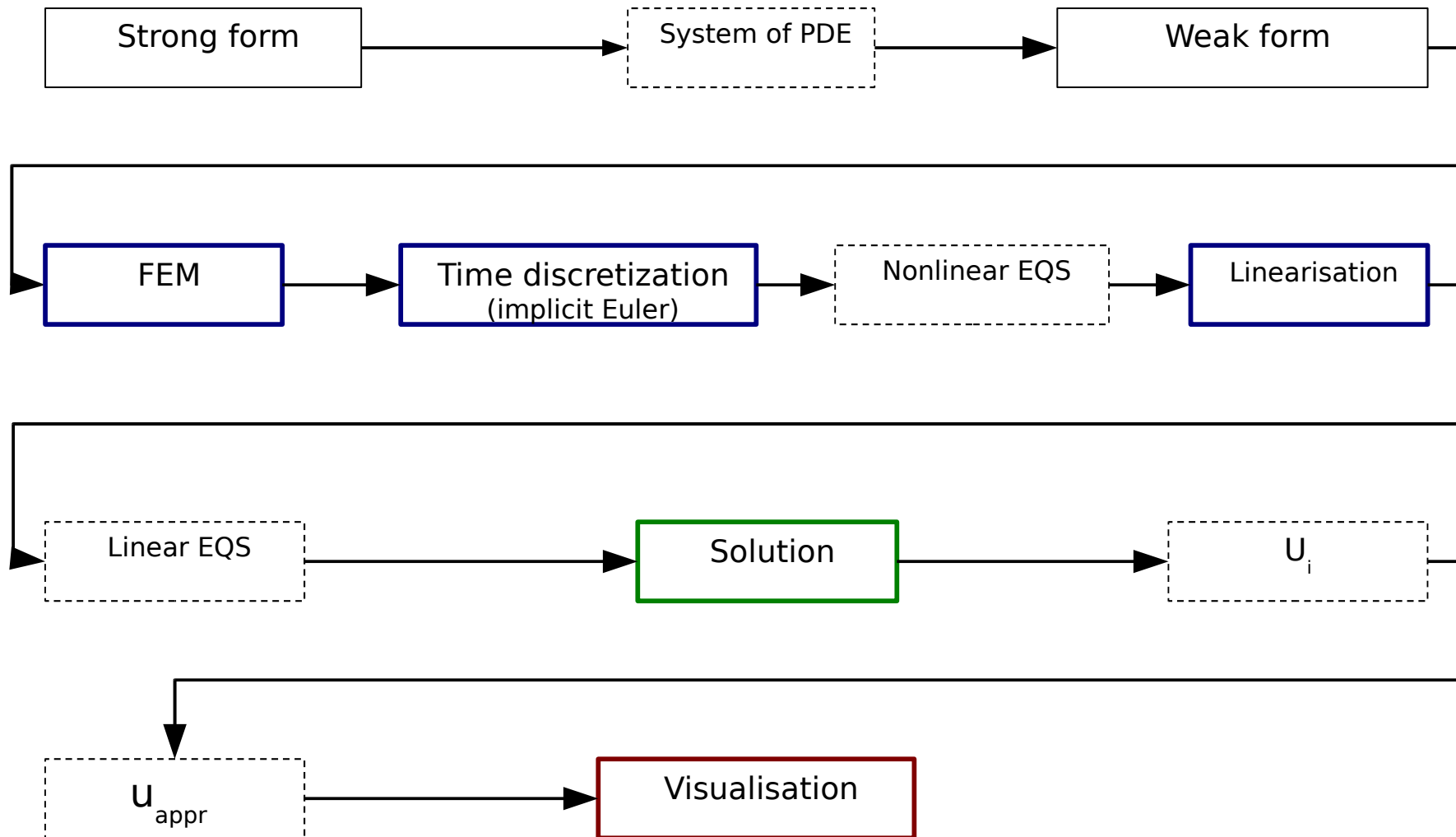


- Calculation of u_i :

$$\sum_{i=1}^N u_i \underbrace{\int_{\Omega} \nabla \Phi_i \nabla \Phi_j}_{A_{ij}} = \underbrace{\int_{\Omega} f \Phi_j}_{b_j} \quad \longrightarrow \quad \sum_{i=1}^N u_i A_{ij} = b_j \quad \longrightarrow \quad \underline{\underline{A}} \cdot \underline{\underline{u}} = \underline{\underline{b}}$$

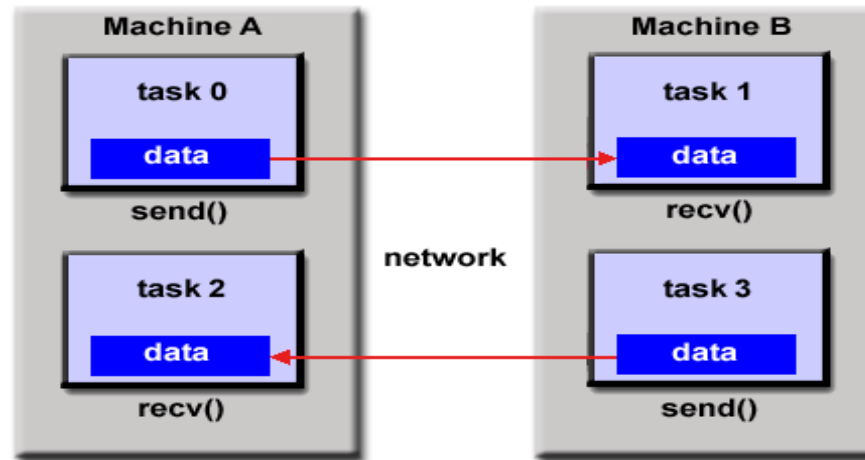
- Solution of linear equation system $\rightarrow u_i \rightarrow u_{app}$

Numeric Workflow



Software

- Written in C++ under Linux
- Used libraries:
 - **PETSc** (Portable, Extensible Toolkit for Scientific Computation): LEQ-Solver
 - **Hermes3d**: FEM
 - **VTK/Paraview**: Visualization
- Parallelization MPI-2 (SPMD, distributed memory)

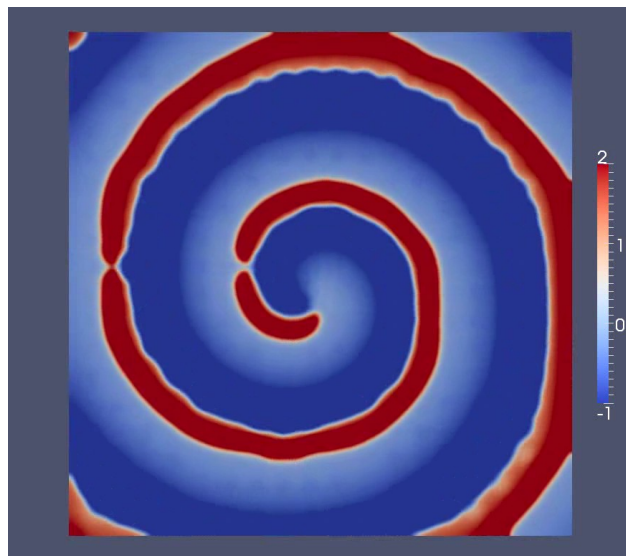
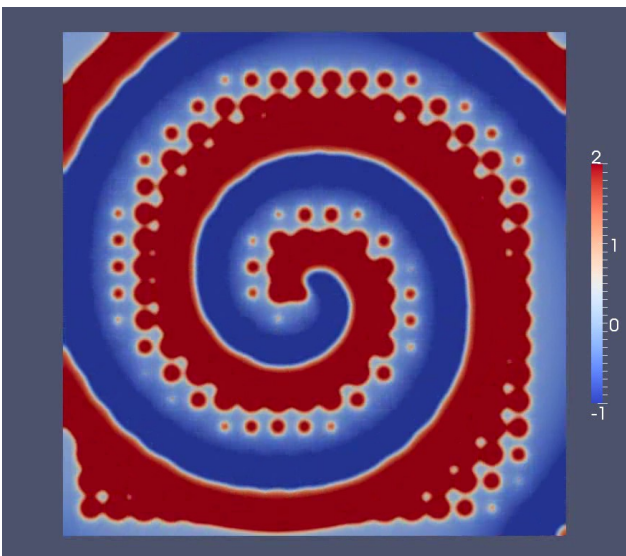
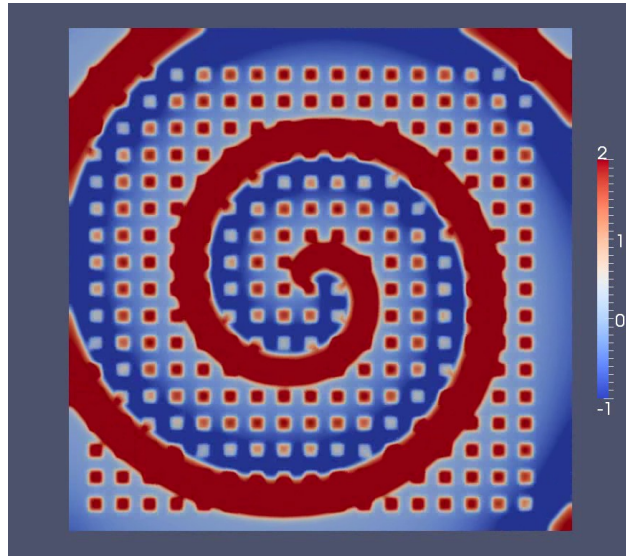


Outline

- Cardiac Arrhythmias
 - Cardiac Conduction System
 - Action Potential
 - Fibrillation
 - Reentry
- Modeling
 - Model
 - BZ-Reaction
 - Finite Element Method
 - Software
- Simulations
 - Plain
 - Sphere
 - Real Geometry

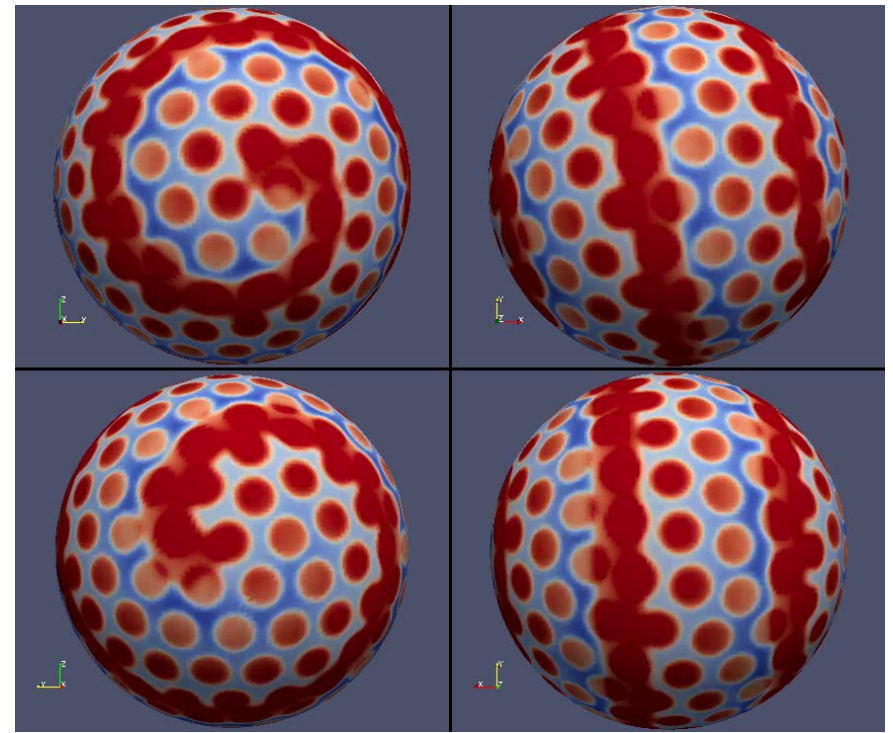
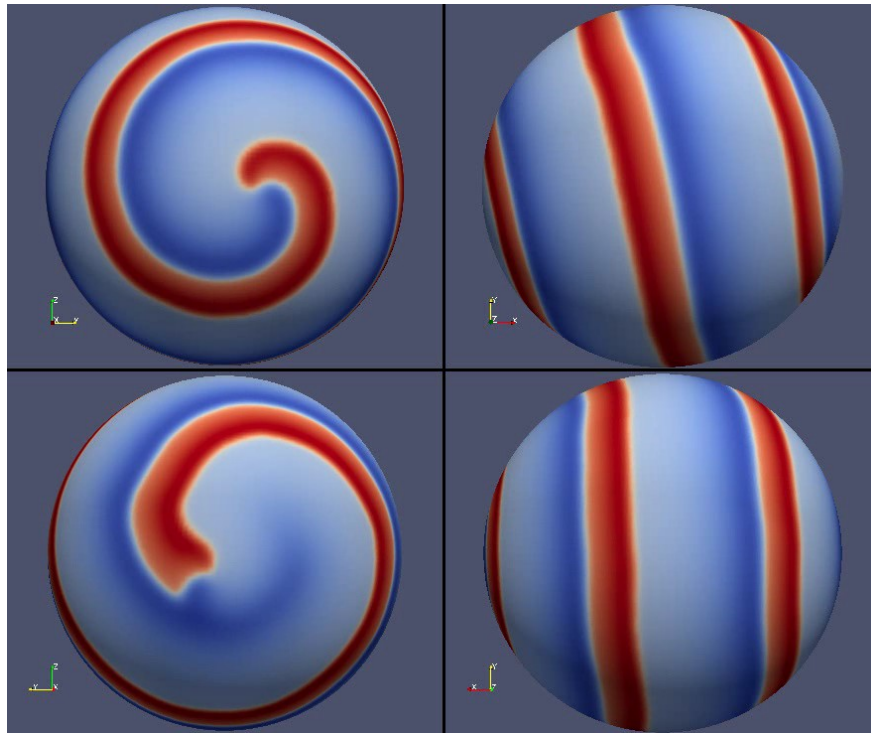
Simulation 1

Spiral wave on plain domain (600x600x2 nodes), grid stimulation

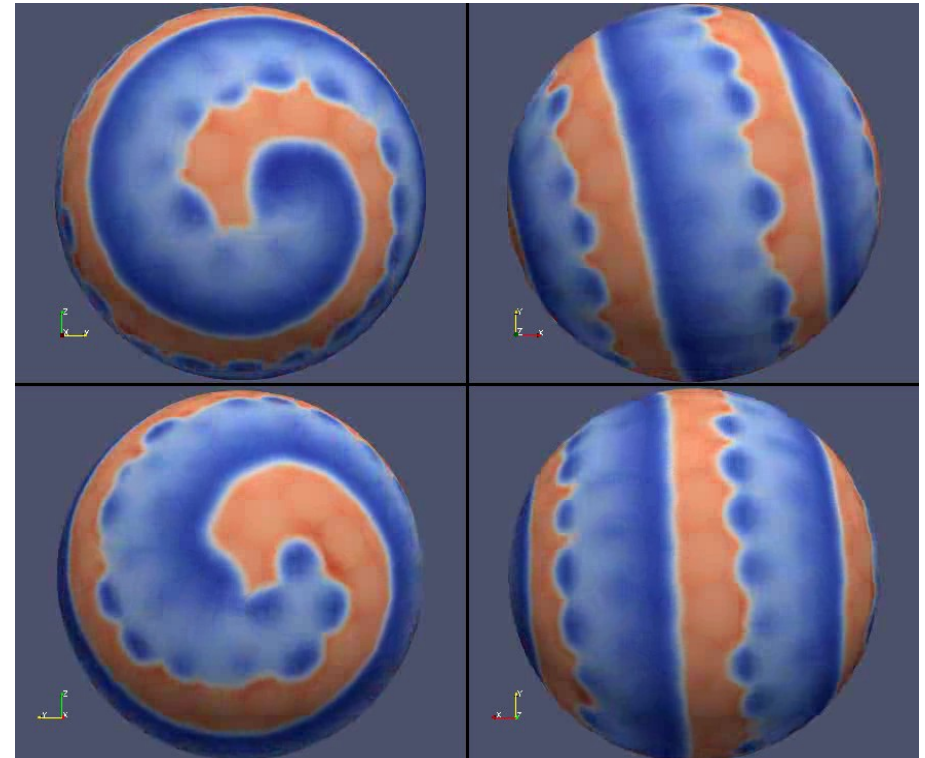
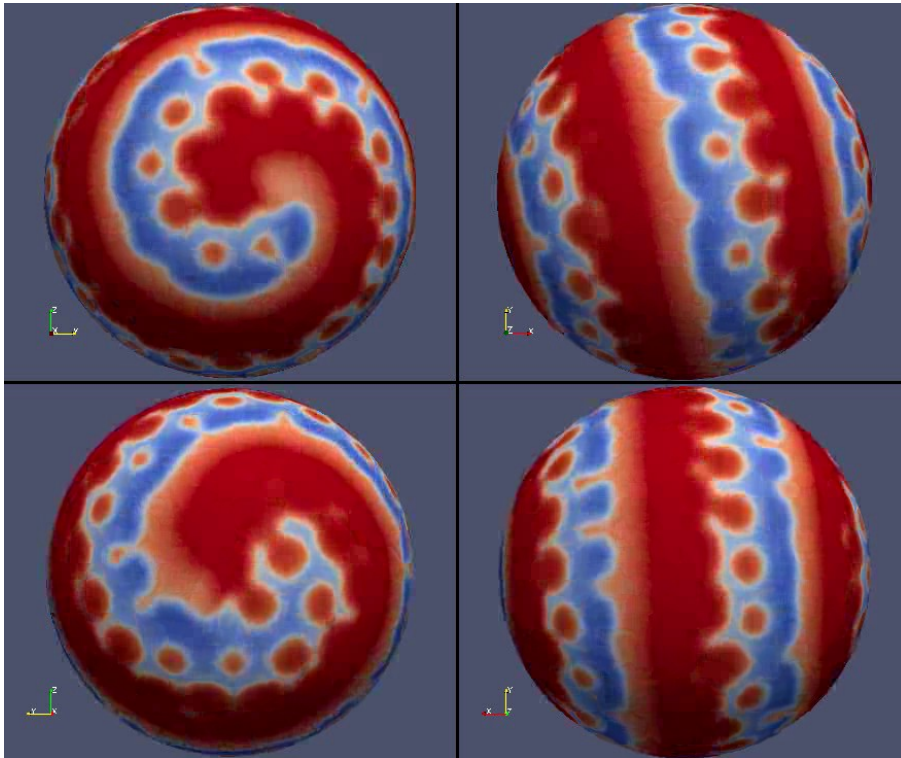


Simulation 2

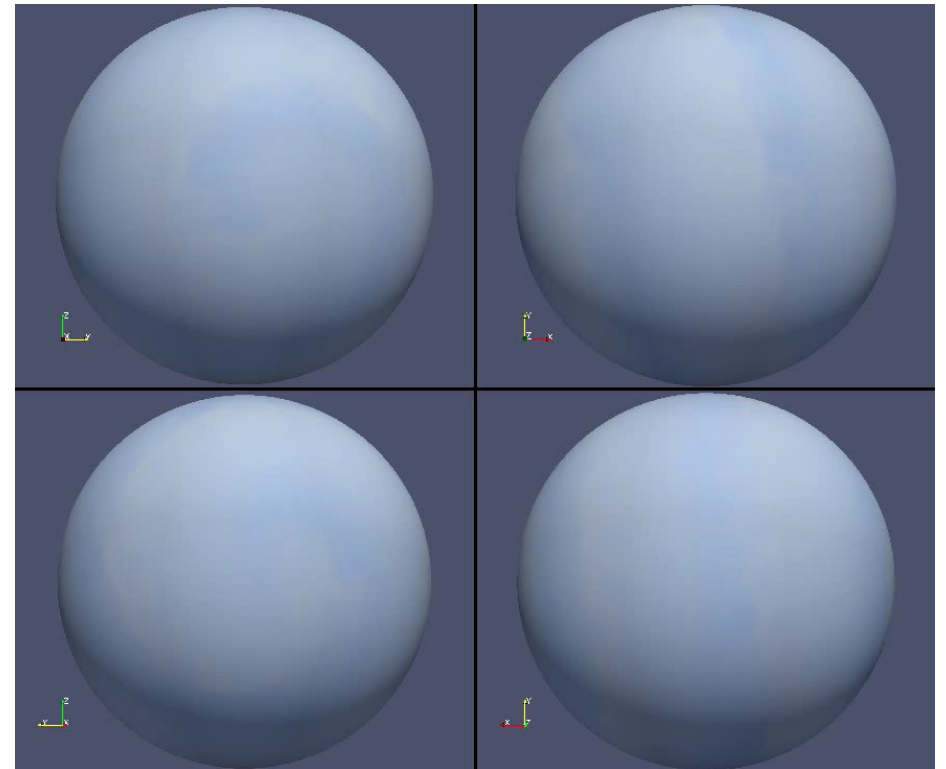
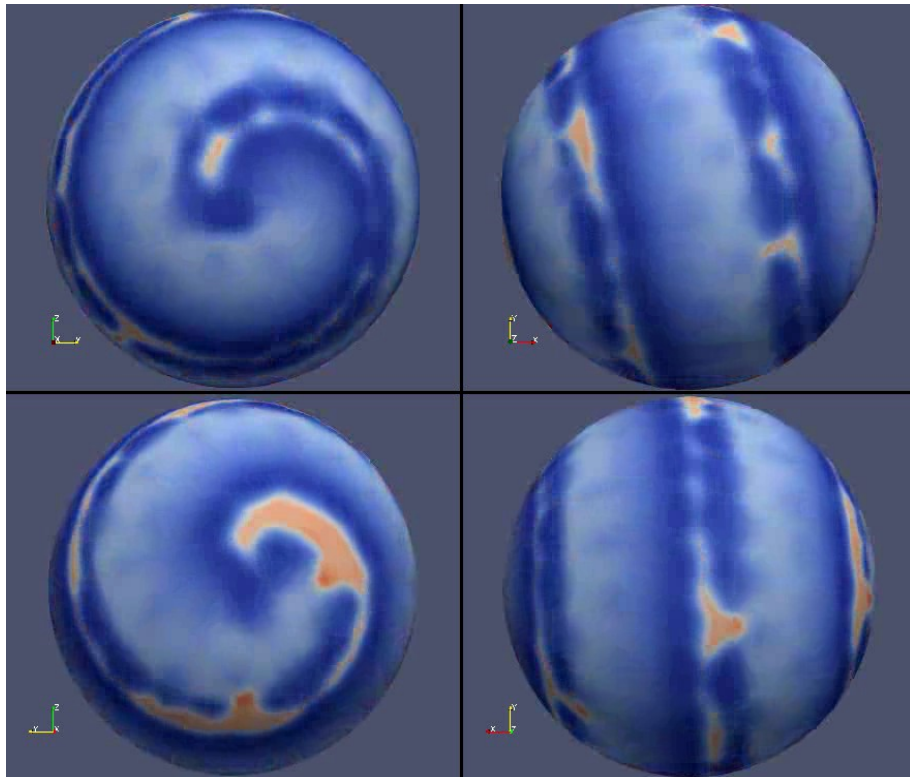
Spiral wave on spherical shell ($r=50$, $d=2$, 70000 nodes)



Simulation 2

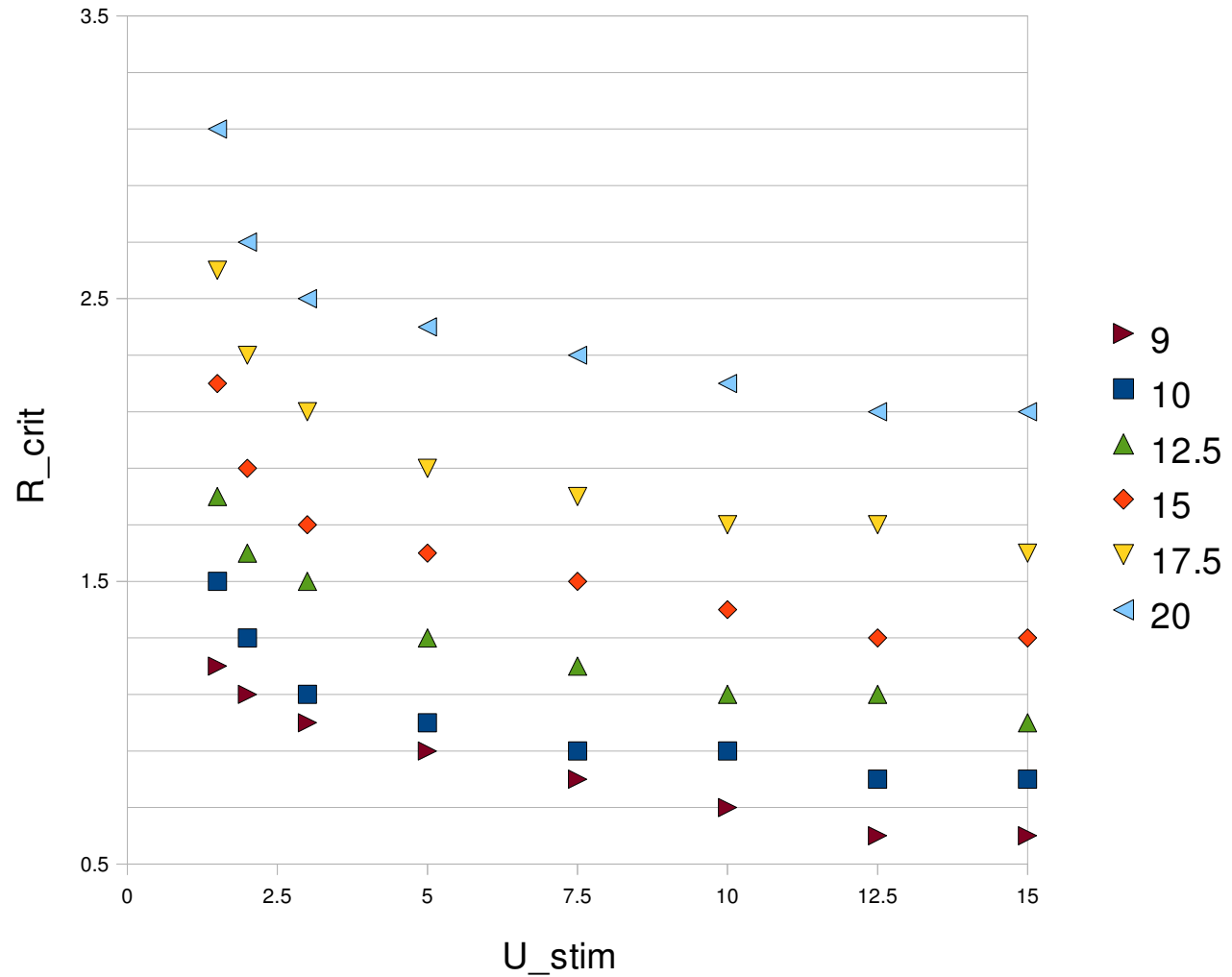


Simulation 2



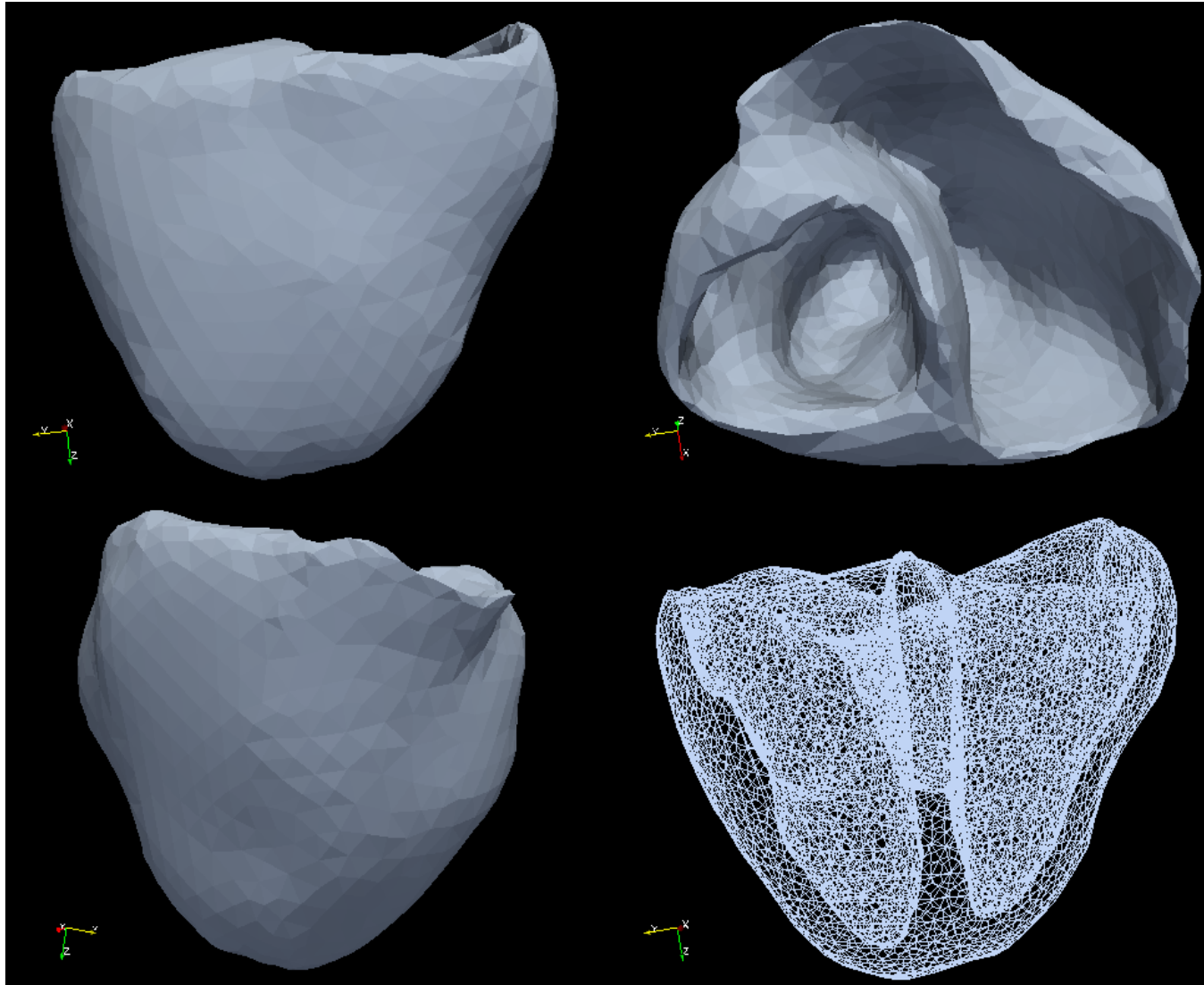
Simulation 2

Critical stimulation size R_{crit}

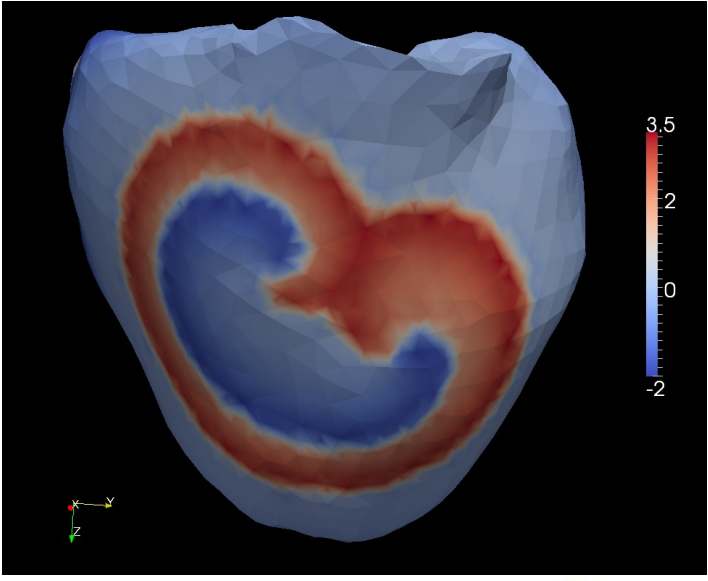
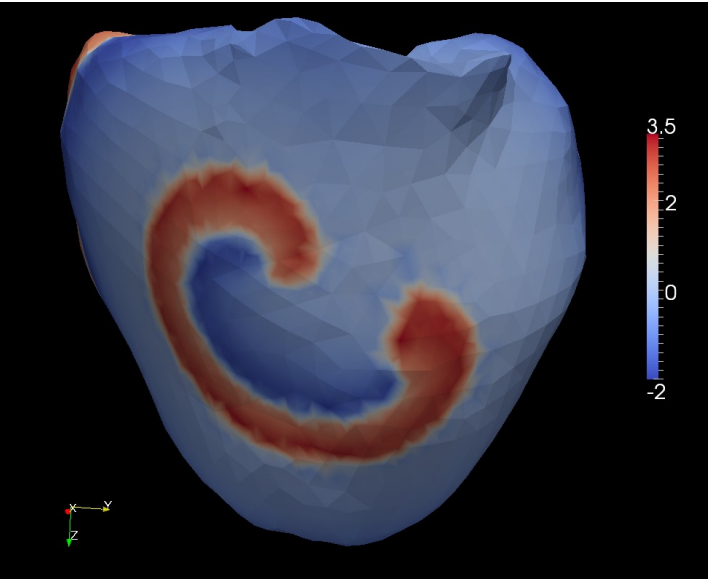
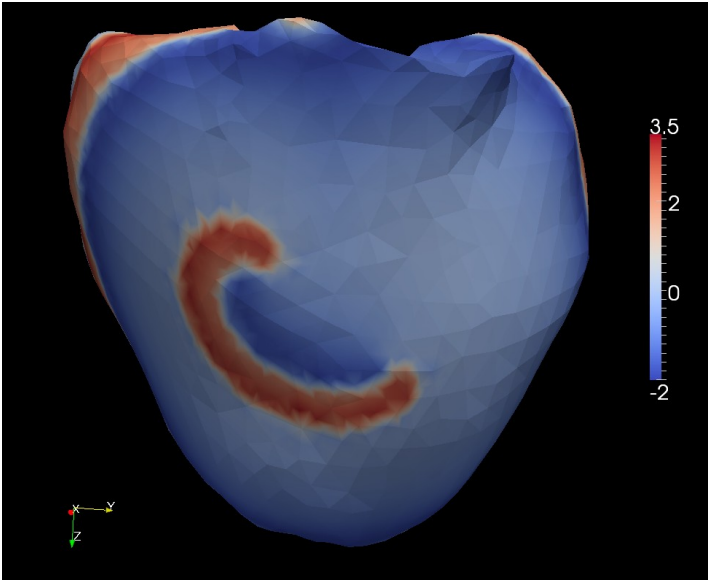
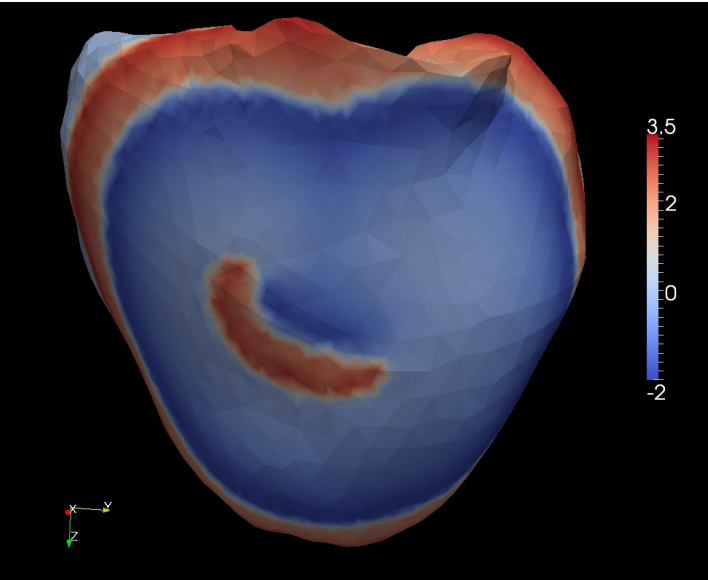


Simulation 3

Mesh of human ventricles



Simulation 3



Simulation 3

