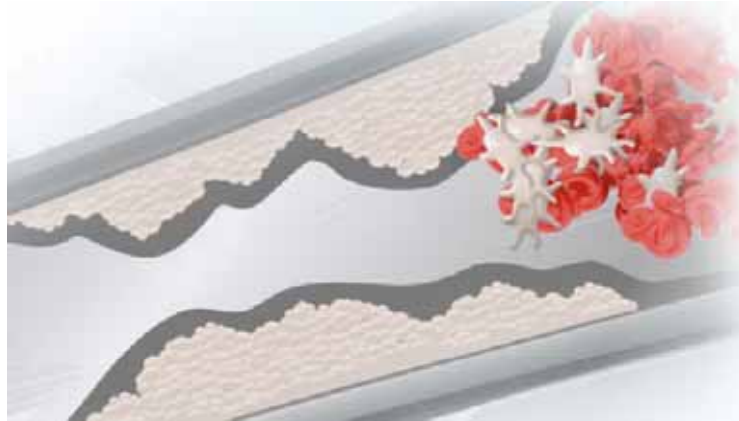


Antithrombogenic coating with SiC



MB - JASS 09
Kathrin Lorenz
Flavius Deleanu

Max Schaldach -
Stiftungsprofessor

Biomedizinische
Technik MSBT

Antithrombogenic coating

Outline:

- **Blood** composition
- **Fibrinogen/Fibrin**
- **Proteins**
- **Coagulation** cascade
- Avoidance of the **electron transfer**
- Coating with **α -SiC:H**
- **PECVD**
- **Quality** of the α -SiC:H- layer

Max Schaldach -
Stiftungsprofessor

Biomedizinische
Technik MSBT

Antithrombogenic coating

Major **challenge** for today's **stent development**:
reduction of acute and subacute **closure** as well as **restenosis**

Problem:

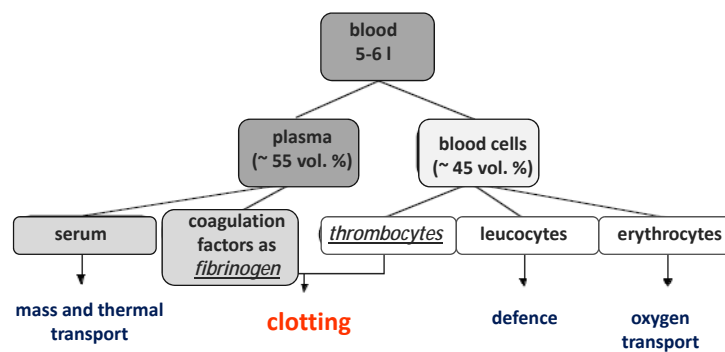
implant materials lead to the formation of a **thrombus**,
respectively a **clot**. This can lead to a **failure** of the **implant**.

Max Schaldach -
Stiftungsprofessor

Biomedizinische
Technik MSBT

Antithrombogenic coating

Blood composition



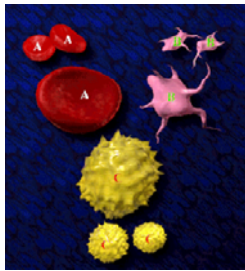
Max Schaldach -
Stiftungsprofessor

Biomedizinische
Technik MSBT

Antithrombogenic coating

Appearance:

- **Red cells:** $5 \cdot 10^6$ /ml
(= erythrocytes)
- **White cells:** $7 \cdot 10^3$ /ml
(= leucocytes)
- **Plateles:** $3 \cdot 10^5$ /ml
(=thrombocytes)



Plasma composition:

water - 90%, **proteins** - 7%,
inorganic c.(Na^+ , K^+ , Mg^{2+} , Ca^{2+} , PO_4^{3-} ...) - 1%,
organic c.(urea, fats, cholesterol, glucose...)
-2% of plasma volume



Max Schaldach -
Stiftungsprofessor

Biomedizinische
Technik MSBT

Antithrombogenic coating

The accumulation of a thrombus is a **blood- plasmatic coagulation cascade** of biochemical processes

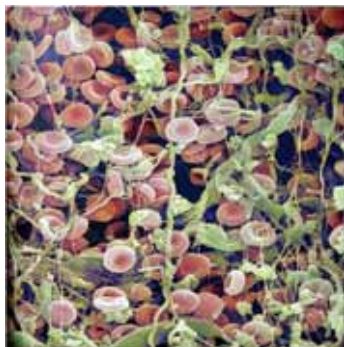


Figure left: microscopic view on a thrombus

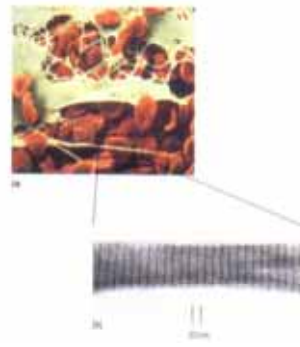


Figure right: electronic micrography of a fibrin section

Max Schaldach -
Stiftungsprofessor

Biomedizinische
Technik MSBT

Antithrombogenic coating

Starting point of the thrombus formation is an **electron transfer** from the **fibrinogen** to the **solid**:



Figure: model of fibrinogen:

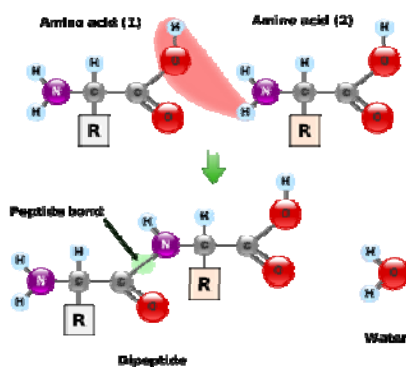
- Consisting of ~ **3000 amino acids**; ~ **50 nm length**
- Arranged in **2 sets of 3 peptide chains** (α , β , γ)

Max Schaldach -
Stiftungsprofessor

Biomedizinische
Technik MSBT

Antithrombogenic coating

What are **proteins**?



→ consist of amino-acids

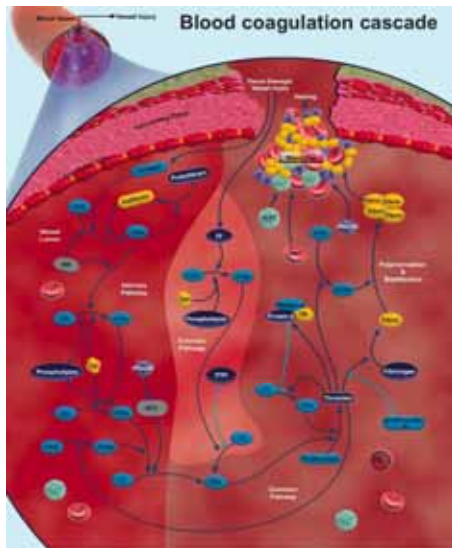
→ 21 different amino-acids

→ peptides = amino-acid-chains

Max Schaldach -
Stiftungsprofessor

Biomedizinische
Technik MSBT

Antithrombogenic coating



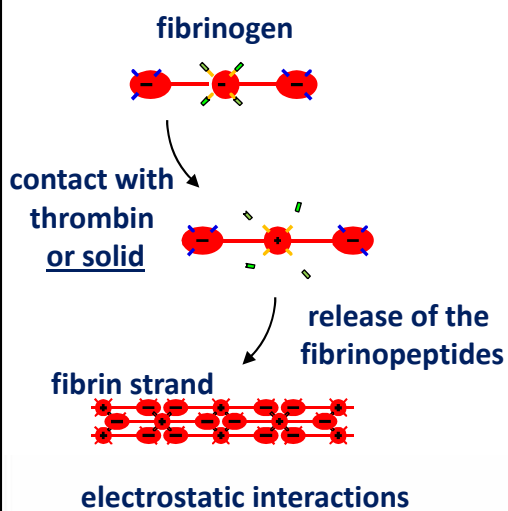
Coagulation cascade for the case of a vessel damage (**blood-stopping**):

→ Numerous proteins catalyze various steps in the cascade

Max Schaldach -
Stiftungsprofessor

Biomedizinische
Technik MSBT

Activation of Fibrinogen



Electron transfer leads to **release of fibrin-peptides**:

→ **new charge** distribution of fibrin

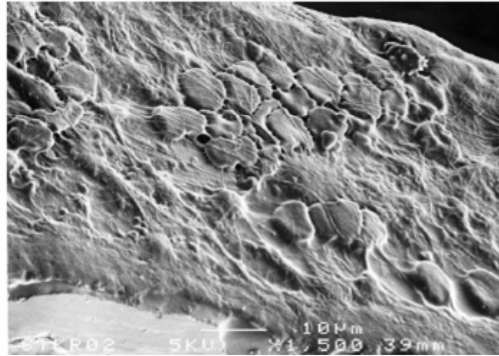
→ **attraction** between fibrin-monomers

→ formation of a **strand**

Max Schaldach -
Stiftungsprofessor

Biomedizinische
Technik MSBT

Antithrombogenic coating



Scanning electron micrography (1500x):
→ **Dense layer** of blood proteins and formed elements covered by **fibrin- strands** already **after 1 day!**

Max Schaldach -
Stiftungsprofessor

Biomedizinische
Technik MSBT

Antithrombogenic coating

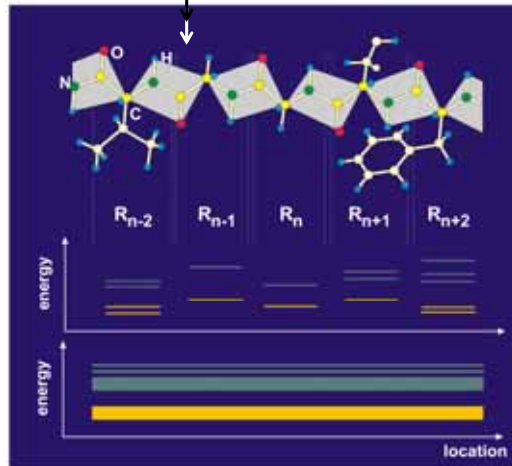
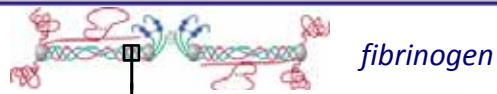
Hypothesis of the physical process:

- **Contact activation** of fibrinogen takes place with an **electron transfer**
- Proteins like fibrinogen have an electronic **structure** similar to that of **amorphous semiconductors**
- **Contact activation** is determined by the **electronic properties** of the macromolecule and the material

Max Schaldach -
Stiftungsprofessor

Biomedizinische
Technik MSBT

Antithrombogenic coating



The **amino acids**
in the peptide chains:

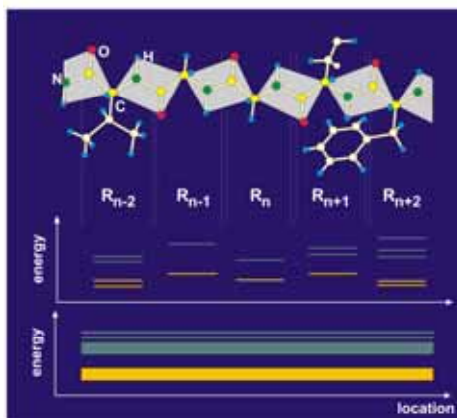
electronic structure
similar to atoms

electronic states

Max Schaldach -
Stiftungsprofessor

Biomedizinische
Technik MSBT

Antithrombogenic coating



Energy level determined by the
type of specific side **chain**

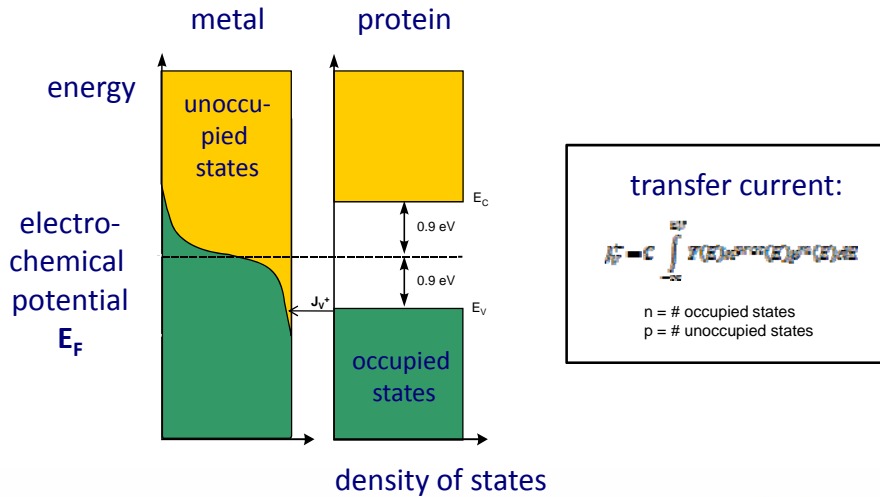
Electronic **interaction** of chains
→ higher and lower **density of**
states in the macromolecule

Electronic states occupied up to
Fermi level E_F
→ region of **low density**

Max Schaldach -
Stiftungsprofessor

Biomedizinische
Technik MSBT

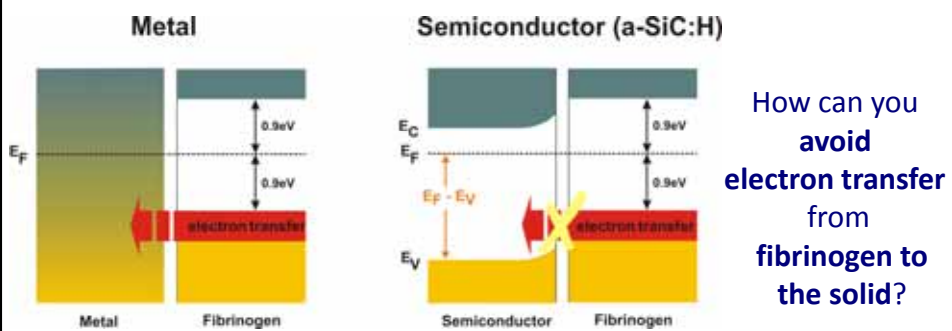
Activation of Proteins on Solid Surface



Max Schaldach -
Stiftungsprofessor

Biomedizinische
Technik MSBT

Antithrombogenicity



Solid: **no empty electronic states** at the transfer level
(deeper than 0,9 eV below Fermi's level E_F)

Preventing charging of the interface (band- bending):
conductivity must be higher than 10^{-3} S/cm

Max Schaldach -
Stiftungsprofessor

Biomedizinische
Technik MSBT

Material selection – Hybrid concept

- **Bulk material:** mechanical stability, plastic deformation, longitudinal flexibility
 - **316 L** show superior mechanical properties
 - but...
 - poor hemo- and biocompatibility
- **Surface:** non-activating
 - has to fulfill critical parameters
 - **Semiconductor** is chosen

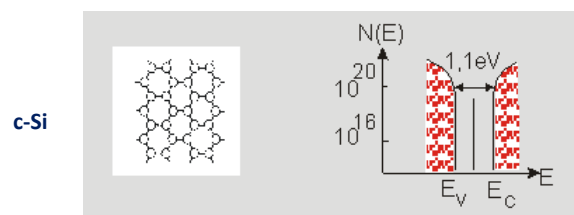


Max Schaldach -
Stiftungsprofessor

Biomedizinische
Technik MSBT

Material selection - Semiconductor

- **Density of states in band gap**



→ $E_{crit} = 0,55 \text{ eV}$

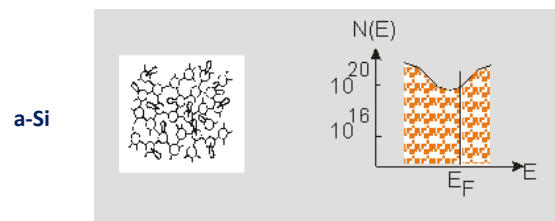
→ crystalline layer → easy chipping of

Max Schaldach -
Stiftungsprofessor

Biomedizinische
Technik MSBT

Material selection - Semiconductor

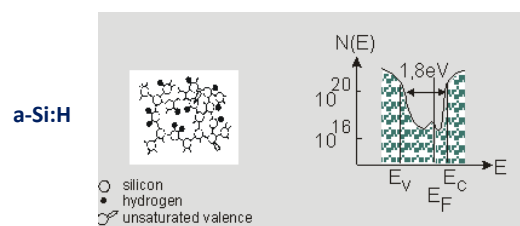
- **Density of states in band gap**



- Good mechanical properties
- No band gap

Material selection - Semiconductor

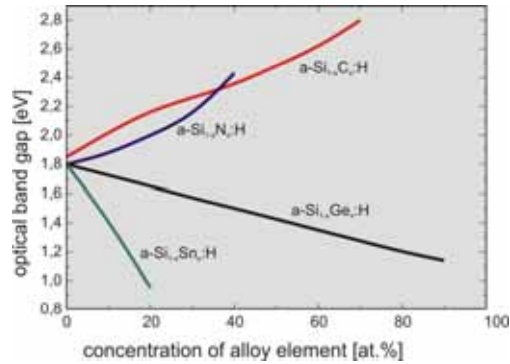
- **Density of states in band gap**



- **Saturation** of the **dangling bonds** with **H**
to create a band gap

Material selection - Semiconductor

- **Band gap properties**



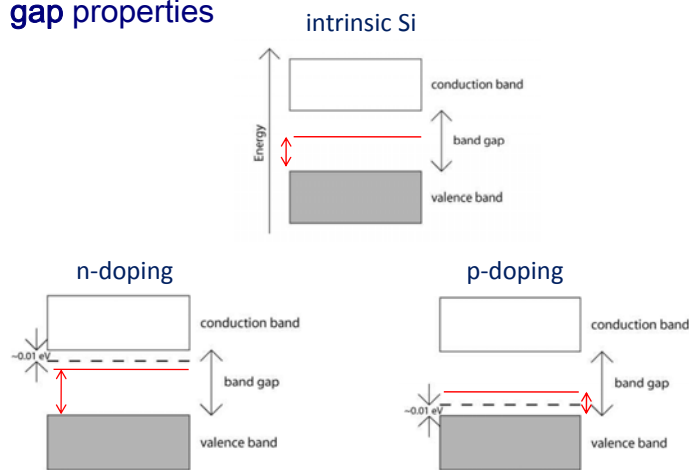
→ Alloying with **C** to increase the band gap

Max Schaldach -
Stiftungsprofessor

Biomedizinische
Technik MSBT

Material selection - Semiconductor

- **Band gap properties**



→ Doping with **P** (n) to shift the fermi level
and to increase E_{crit}

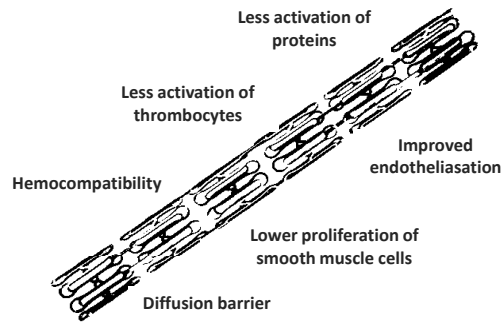
Max Schaldach -
Stiftungsprofessor

Biomedizinische
Technik MSBT

a-SiC:H

Material of choice:

amorphous hydrogen-rich phosphorous-doped silicon carbide (**a-SiC:H**)



Max Schaldach -
Stiftungsprofessor

Biomedizinische
Technik MSBT

Stent production

316L tube
(1.6mm diameter)



laser cutting



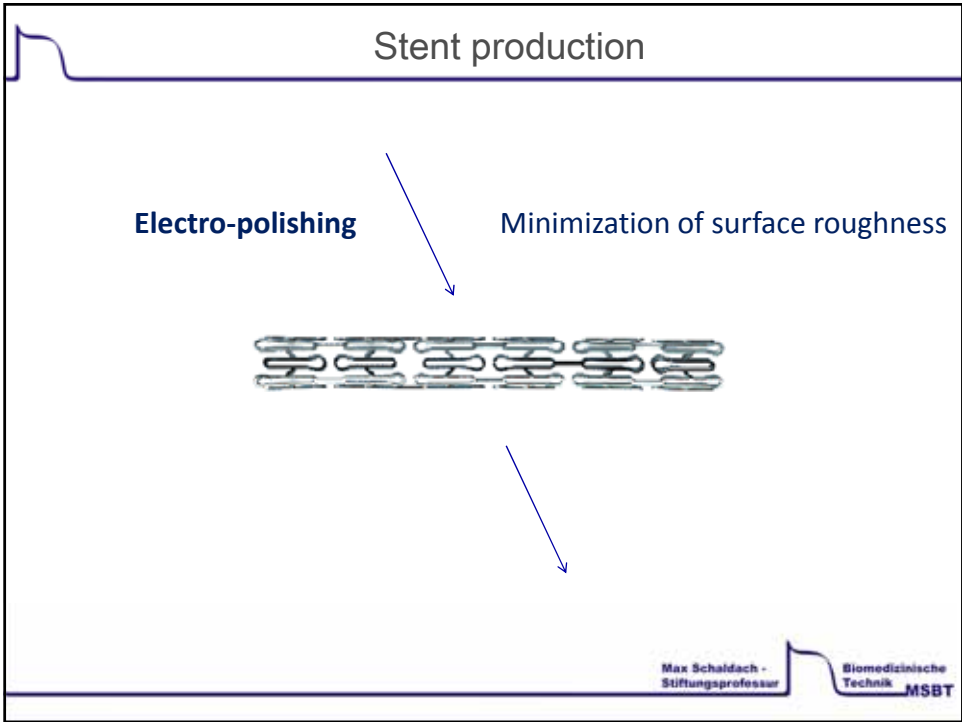
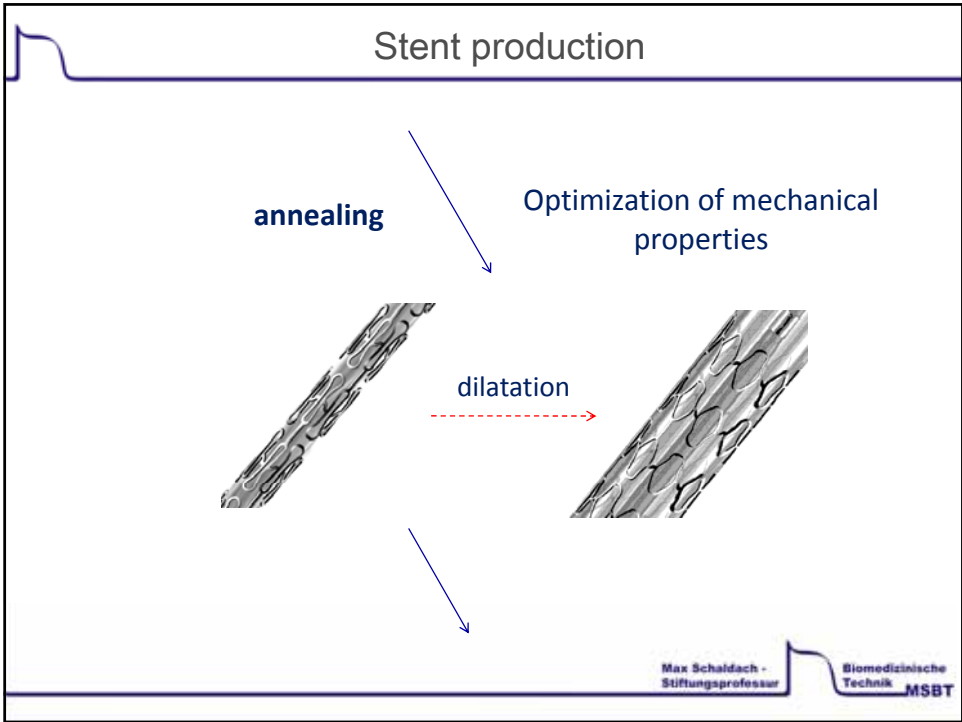
mordant

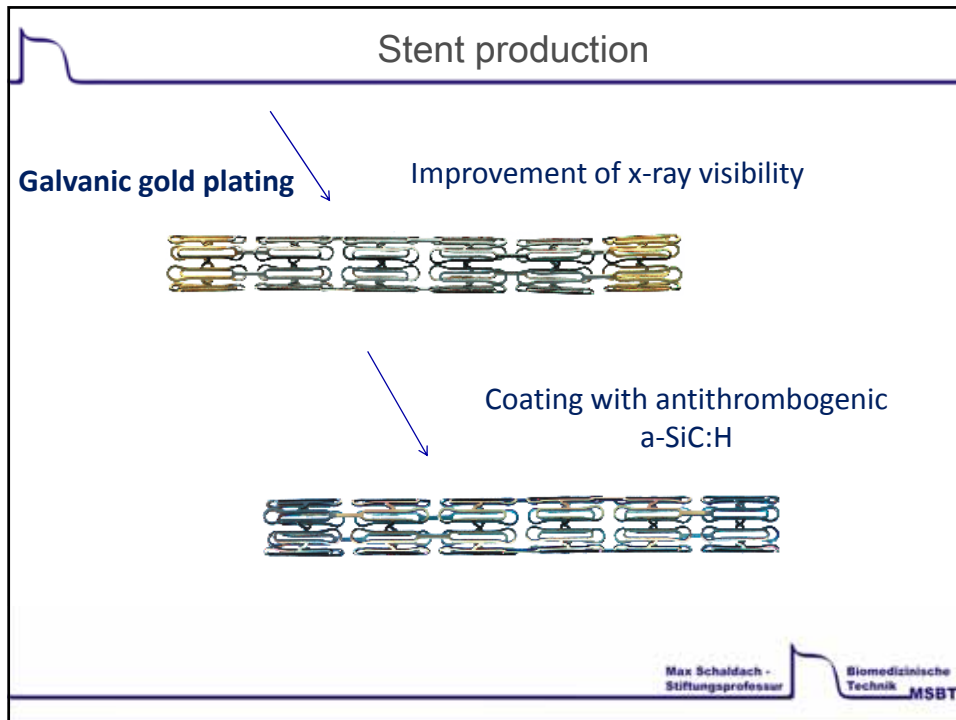
bare stent



Max Schaldach -
Stiftungsprofessor

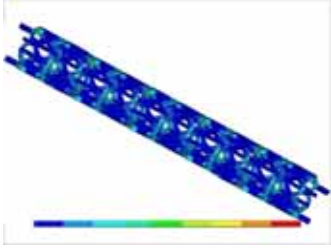
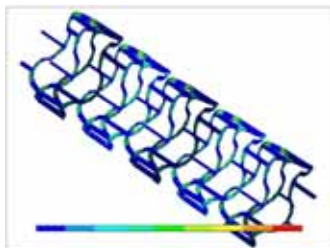
Biomedizinische
Technik MSBT





a-SiC:H

- How **realize** an a-SiC:H-coating?
- **Thickness** of layer?
- Can we achieve a **good adhesion**? Layer has to withstand mechanical stresses during dilatation (40 % strain)!

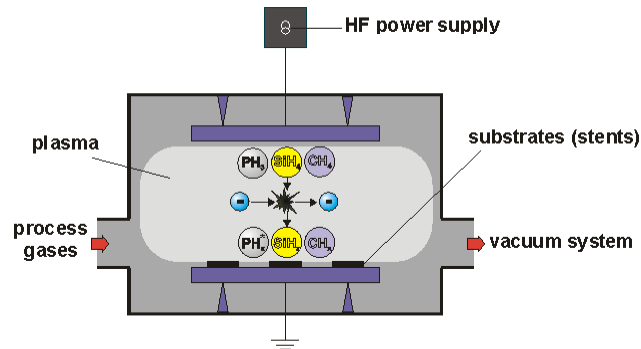



Max Schaldach -
Stiftungsprofessor

Biomedizinische
Technik MSBT

Coating: PECVD process

Pretreatment: cleaning and surface activation (**plasma etching**)

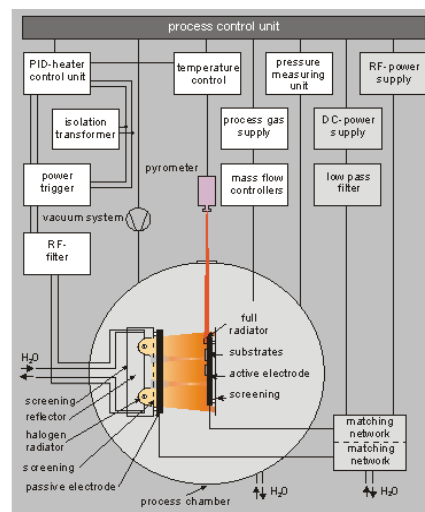


Process gases: silane (SiH₄), methane (CH₄), phosphine (PH₃)

Max Schaldach -
Stiftungsprofessor

Biomedizinische
Technik MSBT

PECVD process



**Capacitive coupled
plasma (13,56 MHz)**

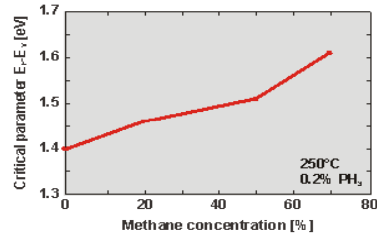
$P = 0,16 \text{ W/cm}^2$
 $p = 0,1 \text{ mbar}$
 $T_{\text{subst}} = 250 \text{ }^\circ\text{C}$
 $T = 2,5 \text{ h}$

Max Schaldach -
Stiftungsprofessor

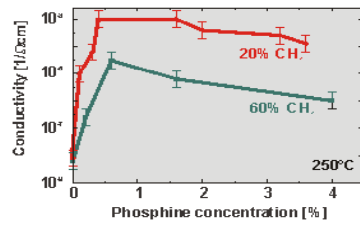
Biomedizinische
Technik MSBT

Calibration of process

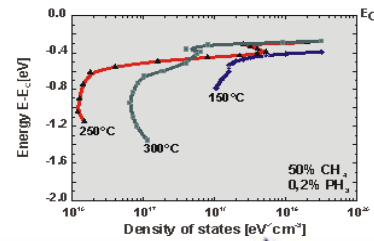
Critical parameter



Conductivity



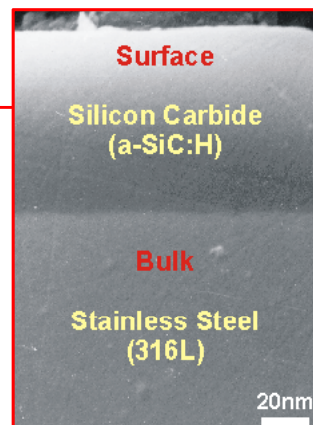
Density of states



Max Schaldach -
Stiftungsprofessor

Biomedizinische
Technik MSBT

Coated layer



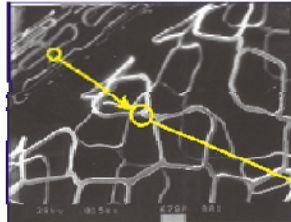
a-SiC:H coating

- amorphous
- phosphore-doped
- hydrogen rich
- thickness $\sim 100\text{ nm}$

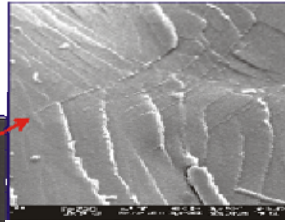
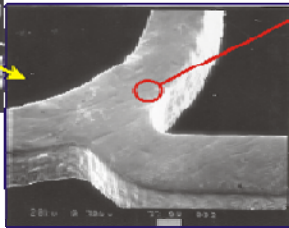
Max Schaldach -
Stiftungsprofessor

Biomedizinische
Technik MSBT

Adherence under tensile strength



-Dilatation from 1.4 to 4 mm



-Site under tensile strength

→ Tight connection between a-SiC:H coating and stent body

Max Schaldach -
Stiftungsprofessor

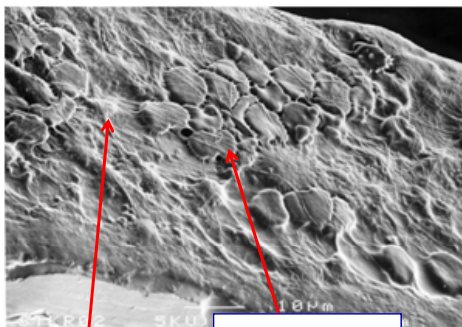
Biomedizinische
Technik MSBT

Hemocompatibility of Silicon Carbide Coating

Stainless Steel (316L)

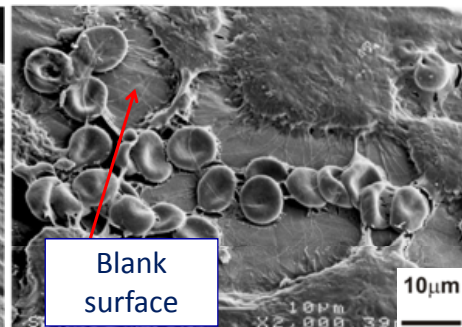
Silicon Carbide (a-SiC:H)

1 day in contact with blood



Fibrin
strands

Thrombi and
erythrocytes



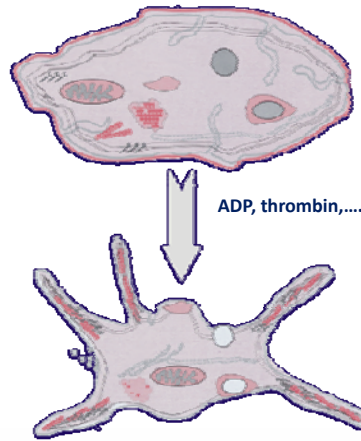
Blank
surface

SEM images

Max Schaldach -
Stiftungsprofessor

Biomedizinische
Technik MSBT

Activation of cells



Resting thrombocyte

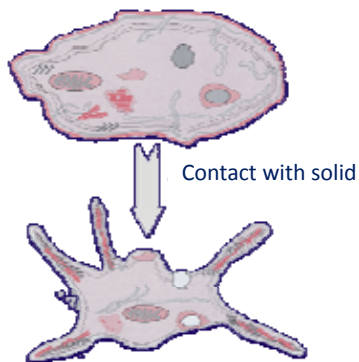
Activated state

Max Schaldach -
Stiftungsprofessor

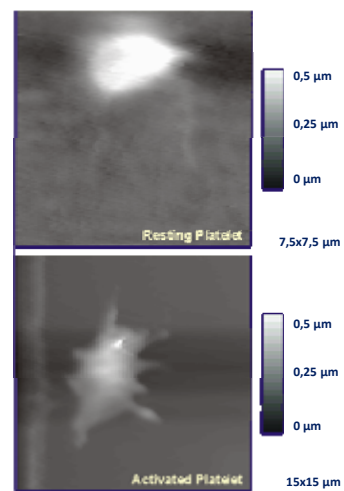
Biomedizinische
Technik MSBT

Improvement of cell interaction

Silicon Carbide (α -SiC:H)



Stainless steel (316 L)



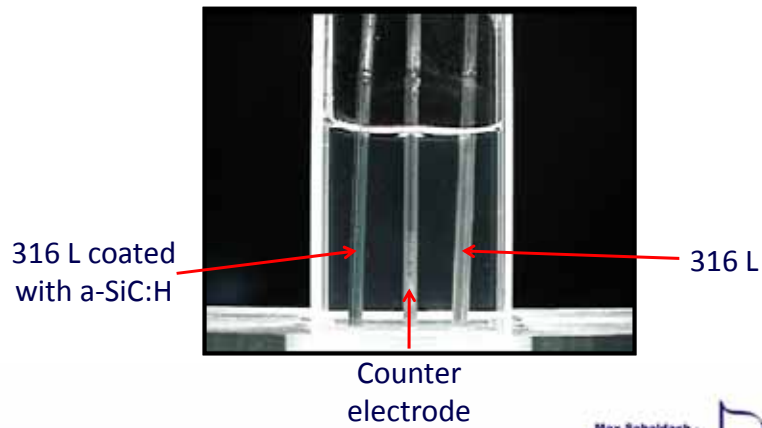
AFM images

Max Schaldach -
Stiftungsprofessor

Biomedizinische
Technik MSBT

Experimental Setup

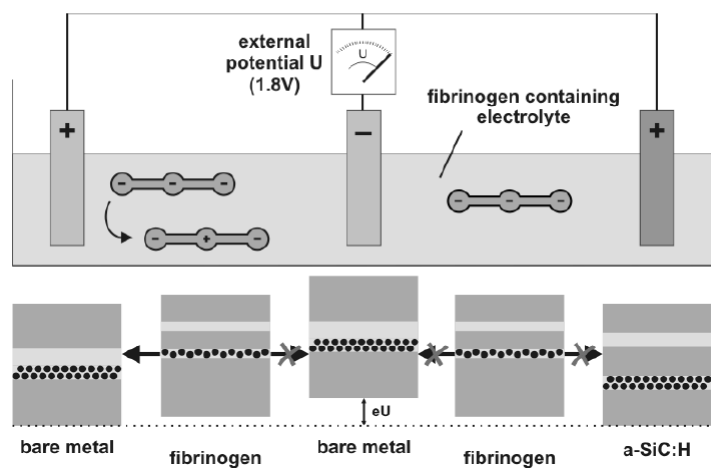
- Electrolyte with **fibrinogen** (physiological concentration 4 g/l)
- 3 electrodes



Max Schaldach -
Stiftungsprofessor

Biomedizinische
Technik MSBT

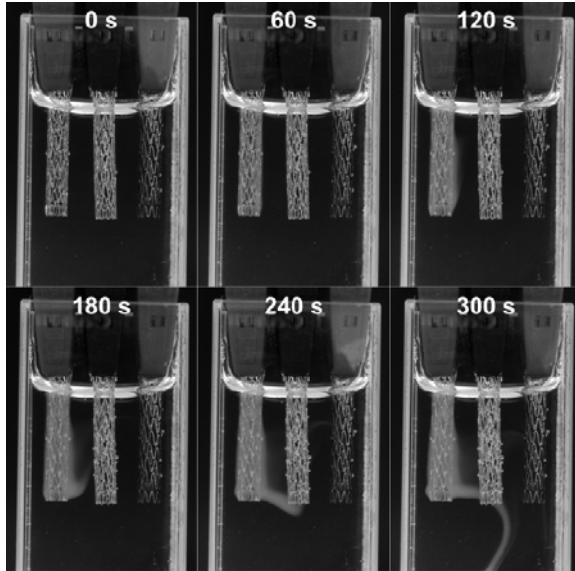
Experiment – Electronic Model



Max Schaldach -
Stiftungsprofessor

Biomedizinische
Technik MSBT

Experiment



- Verification of the electronic model
- No fibrin formation at the coated stent

Max Schaldach -
Stiftungsprofessor

Biomedizinische
Technik MSBT